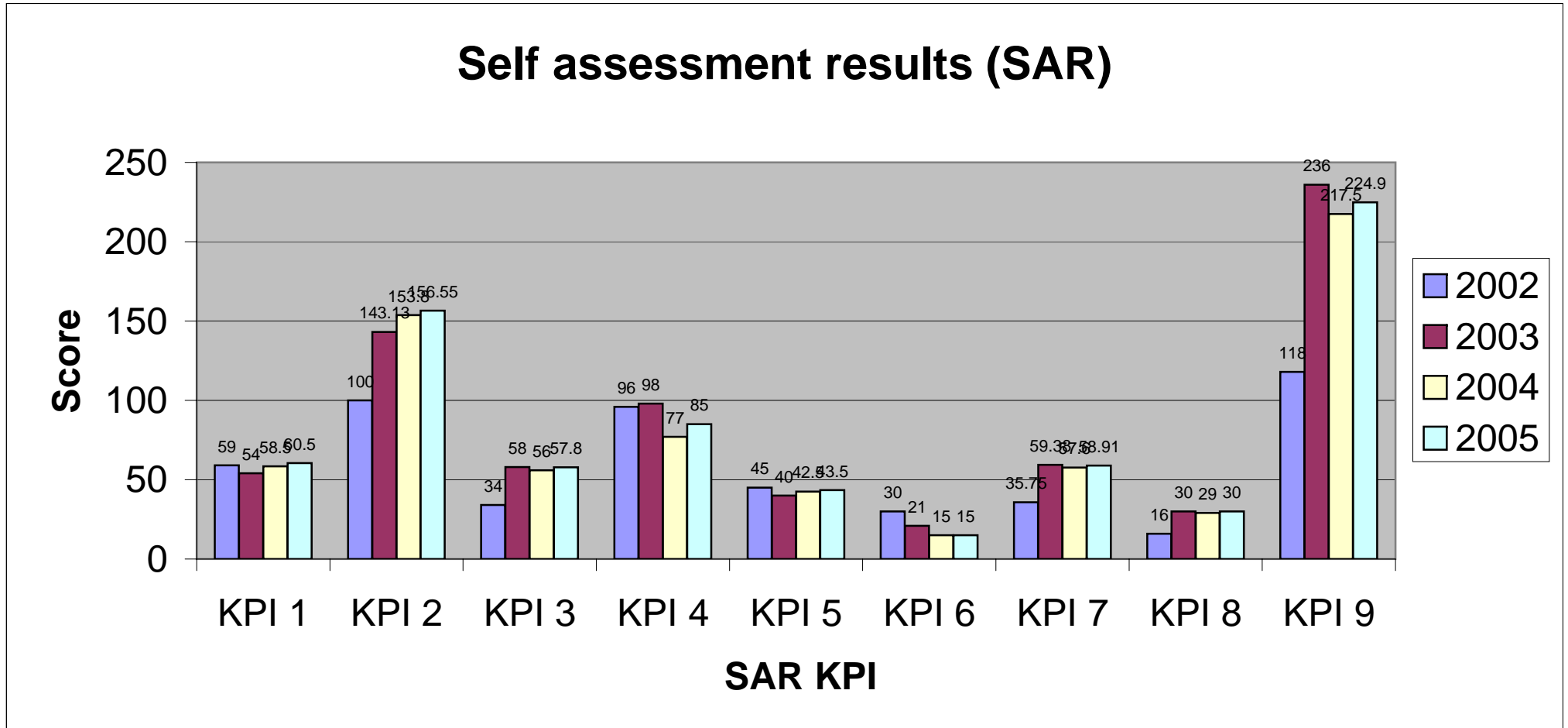


**Table 1: Comparison of SAR and IAAR by Academic Year 2002 - 2005**  
**ABAC School of Biotechnology**

	Total Score	Band Performance (Low1 to High 8)					Combined 4 year average (2002-2005)		2002		2003		2004		2005	
	KPI Score Standards	2002-2005	2002	2003	2004	2005	SAR	IAAR	SAR	IAAR	SAR	IAAR	SAR	IAAR	SAR	IAAR
KPI 1	80	6	High 6	High 6	Low 6	6	58.00	54.00	59	-	54	62	58.5	48	60.5	52
KPI 2	200	Low 6	4	5	High 6	High 6	138.37	122.67	100	-	143.13	100	153.8	132	156.55	136
KPI 3	80	High 5	High 3	5	6	High 6	51.45	50.00	34	-	58	38	56	56	57.8	56
KPI 4	120	6	7	7	High 5	Low 6	89.00	81.33	96	-	98	96	77	70	85	78
KPI 5	50	High 7	8	High 7	High 7	High 7	42.75	42.67	45	-	40	45	42.5	43	43.5	40
KPI 6	30	Low 6	High 8	High 7	4	4	20.25	20.00	30	-	21	30	15	15	15	15
KPI 7	80	High 5	High 3	Low 6	Low 6	6	52.91	49.67	35.75		59.38	45	57.6	52	58.91	52
KPI 8	40	Low 6		High 5	Low 7	High 6	26.25	27.67	16	-	30	22	29	32	30	29
KPI 9	320	Low 5	Low 3	Low 5	High 5	High 5	199.10	166.00	118	-	236	136	217.5	187	224.9	175
Total Score	1000	High 5	High 4	Low 6	Low 6	Low 6	678.08	614.00	533.75	0.00	739.51	574.00	706.90	635.00	732.16	633.00

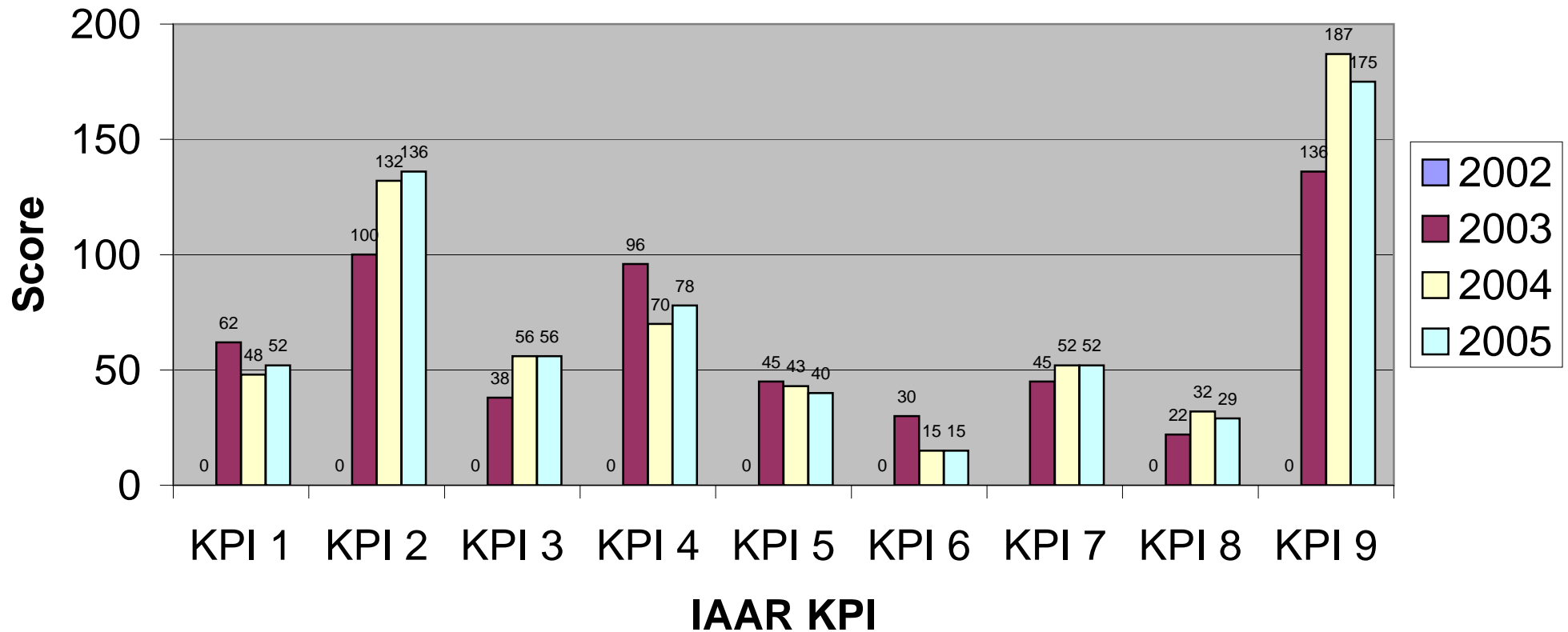
Remark : This report was not included IAAR of academic year 2002 .

**Graph 1:** Self Assessment Results of Academic year 2002 – 2005  
 ABAC School of Biotechnology



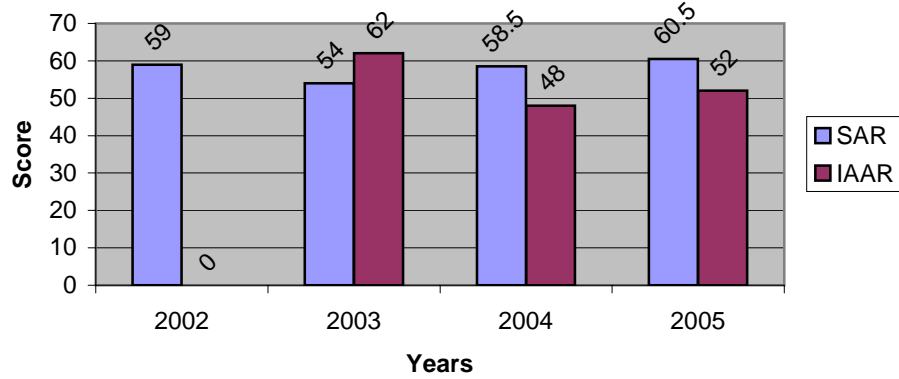
**Graph 2: Internal Audit and Assessment Results by the IAAT 2002 – 2005**  
ABAC School of Biotechnology

## Internal Audit and Assessment Result 2002-2005

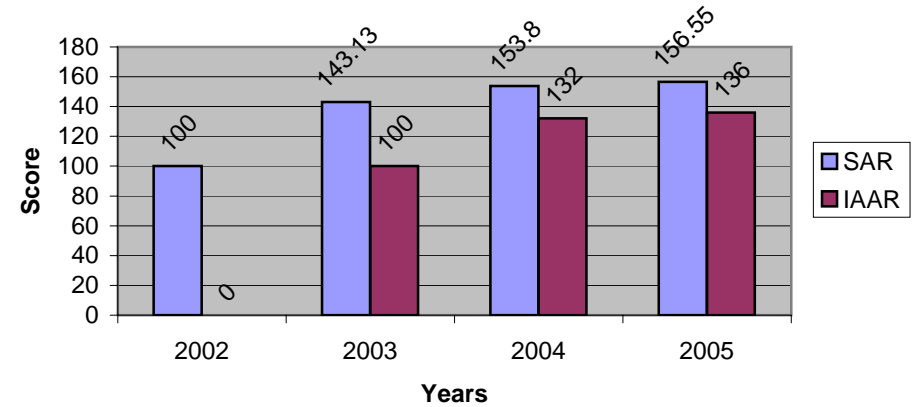


**Graph 3-10: Comparison by KPI of Internal Audit and Assessment Results of Academic year 2002-2005**  
**ABAC School of Biotechnology**

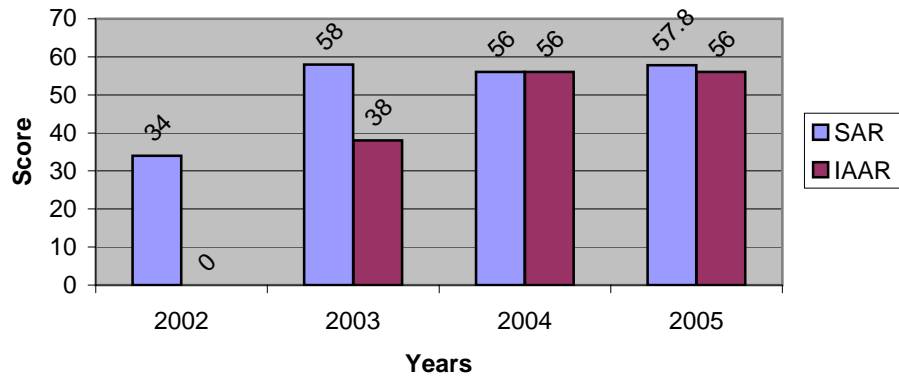
**Graph 3 : KPI 1 Vision, Mission and Strategic Plans (80)**



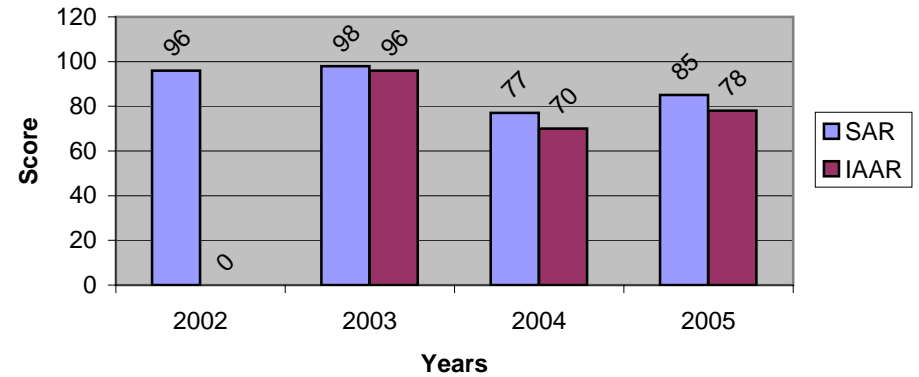
**Graph 4 : KPI 2 Teaching and Learning (200)**



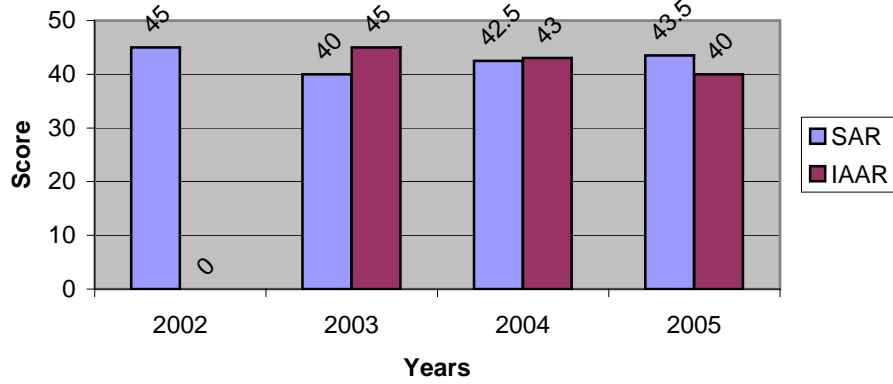
**Graph 5 : KPI 3 Student Activities (80)**



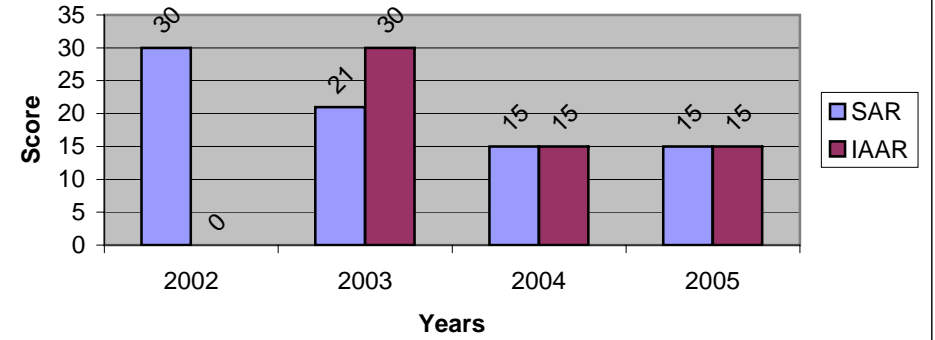
**Graph 6 : KPI 4 Research (120)**



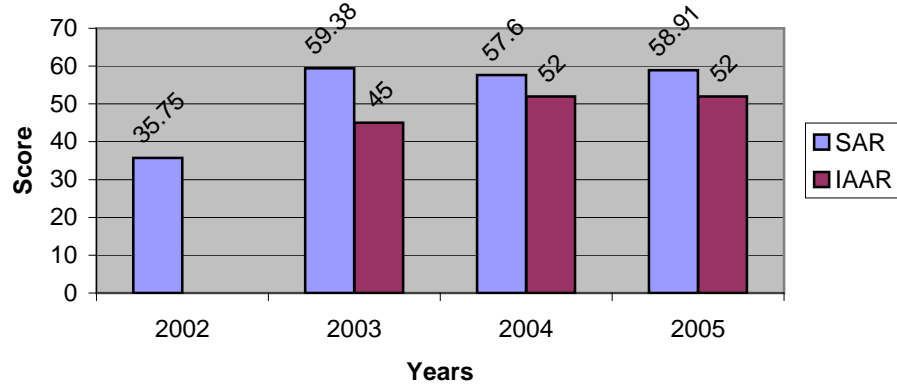
**Graph 7 : KPI 5 Academic Services (50)**



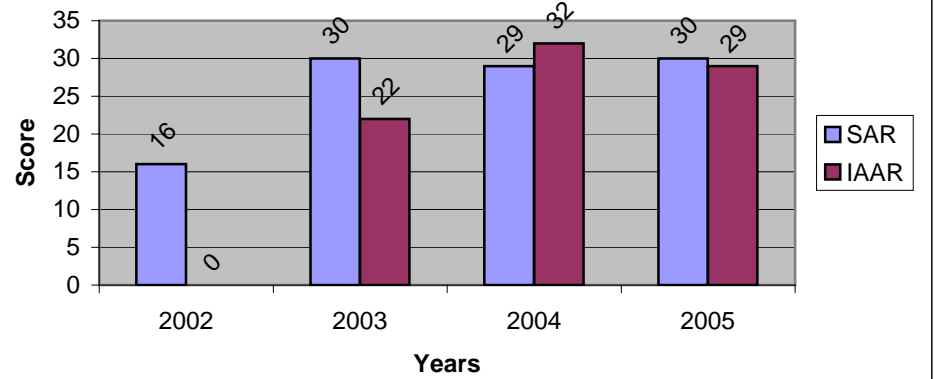
**Graph 8 : KPI 6 Promotion of Thai Arts and Cultures (30)**



**Graph 9 : KPI 7 Administration (80)**



**Graph 10 : KPI 8 Finance and Budgeting (40)**



**Graph 11 : KPI 9 Quality Assurance and Performance Results (320)**

