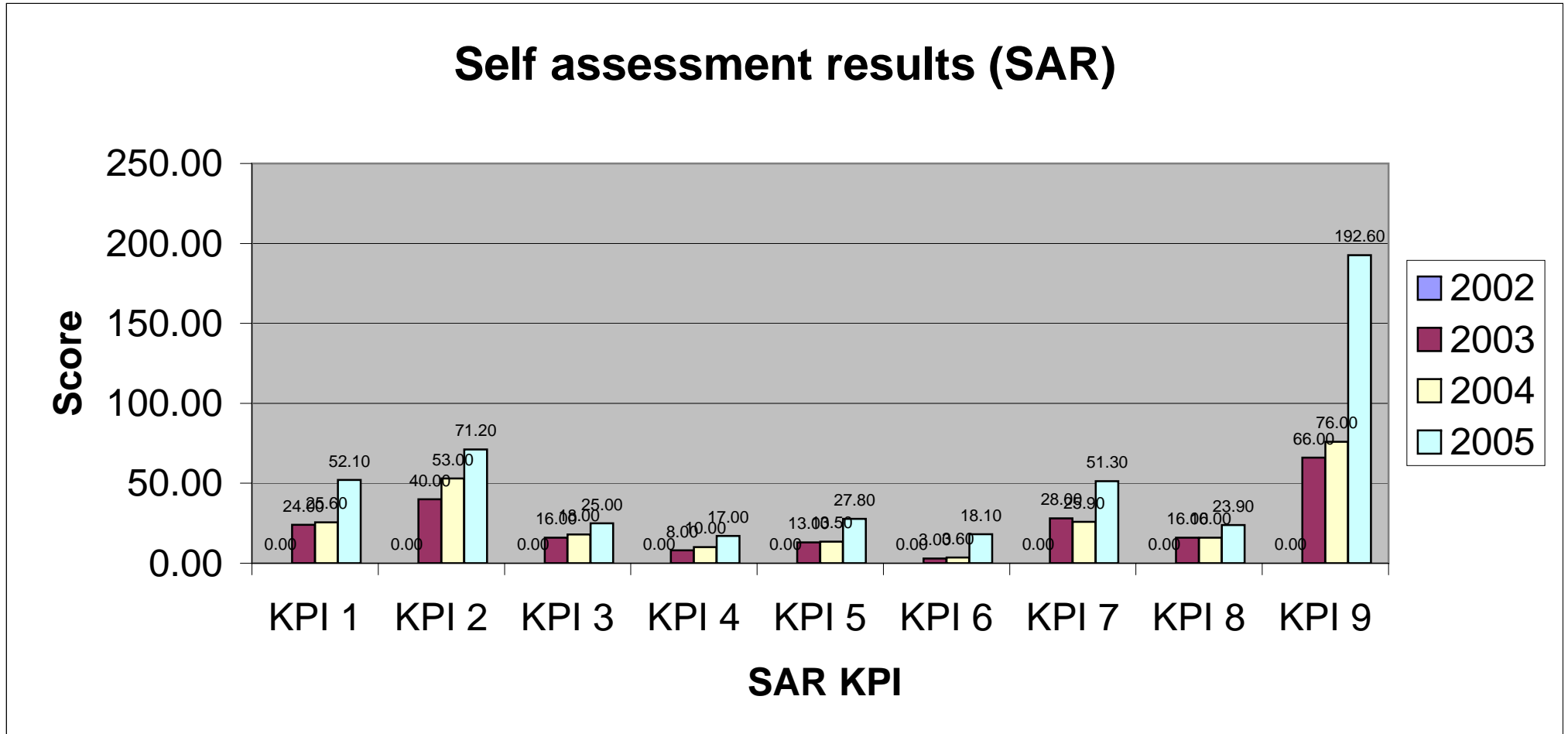


**Table 1: Comparison Academic Year 2002 - 2005  
Office of President**

	Total Score	Band Performance (Low 1 to High 8)					Combined 4 year average (2002-2005)		2002		2003		2004		2005	
	KPI Score Standards	(2002-2005)	2002	2003	2004	2005	SAR	IAAR	SAR	IAAR	SAR	IAAR	SAR	IAAR	SAR	IAAR
KPI 1	80	High 3	-	2	High 2	Low 5	33.90	35.00	0.00	0.00	24.00	0.00	25.60	28.00	52.10	42.00
KPI 2	200	Low 3	-	1	High 2	3	54.73	86.00	0.00	0.00	40.00	0.00	53.00	80.00	71.20	92.00
KPI 3	80	Low 3	-	1	High 2	High 3	19.67	38.50	0.00	0.00	16.00	0.00	18.00	32.00	25.00	45.00
KPI 4	80	High 2	-	Low 1	Low 2	High 3	11.67	42.50	0.00	0.00	8.00	0.00	10.00	36.00	17.00	49.00
KPI 5	50	2	-	Low 2	High 1	High 3	18.10	12.50	0.00	0.00	13.00	0.00	13.50	10.00	27.80	15.00
KPI 6	30	Low 3	-	Low 1	Low 1	Low 6	8.23	14.50	0.00	0.00	3.00	0.00	3.60	6.00	18.10	23.00
KPI 7	120	2	-	High 1	High 1	3	35.07	35.20	0.00	0.00	28.00	0.00	25.90	26.40	51.30	44.00
KPI 8	40	Low 3	-	3	2	Low 4	18.63	10.50	0.00	0.00	16.00	0.00	16.00	8.00	23.90	13.00
KPI 9	320	High 3	-	1	High 2	5	111.53	161.50	0.00	0.00	66.00	0.00	76.00	128.00	192.60	195.00
Total Score	1000	Low 3	-	High 1	2	4	311.53	436.20	0.00	0.00	214.00	0.00	241.60	354.40	479.00	518.00

**Graph 1: Self assessment results of Academic year 2002 – 2005**

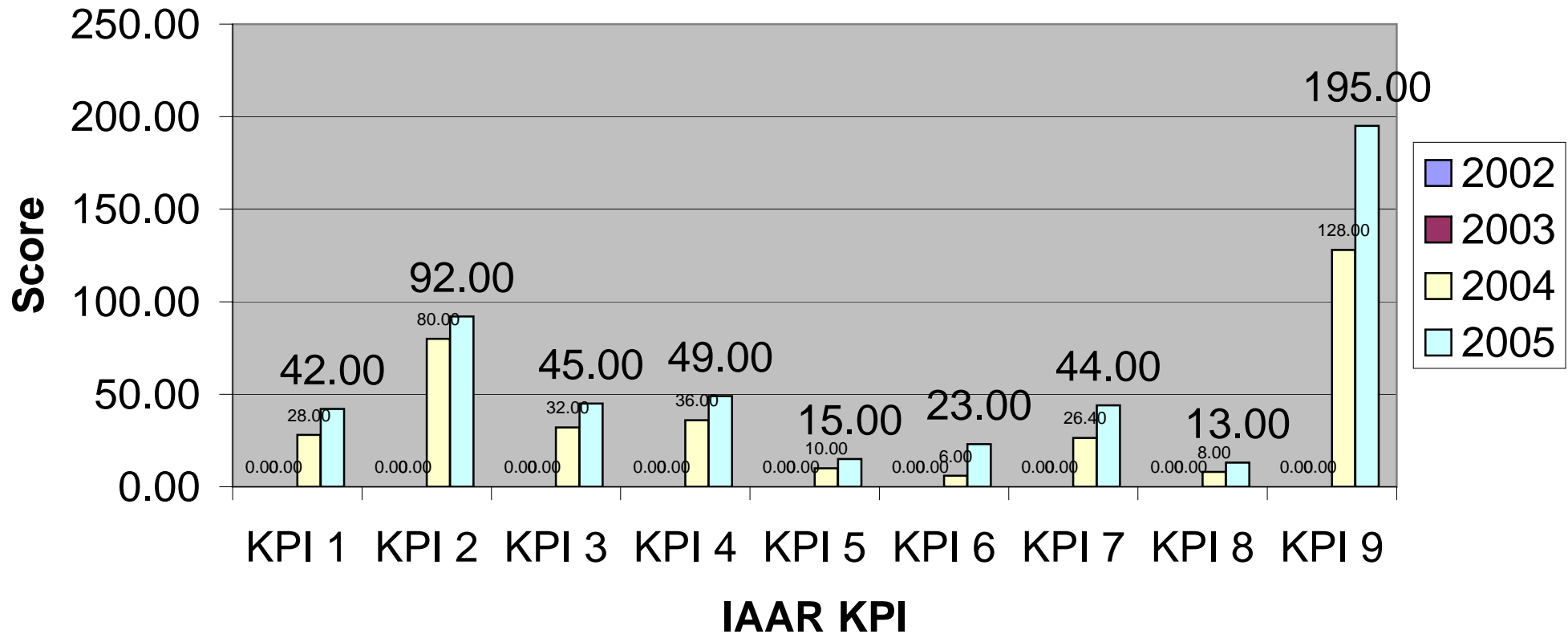
Office of President



**Graph 2: Internal Audit and Assessment Results by the IAAT 2002 – 2005**

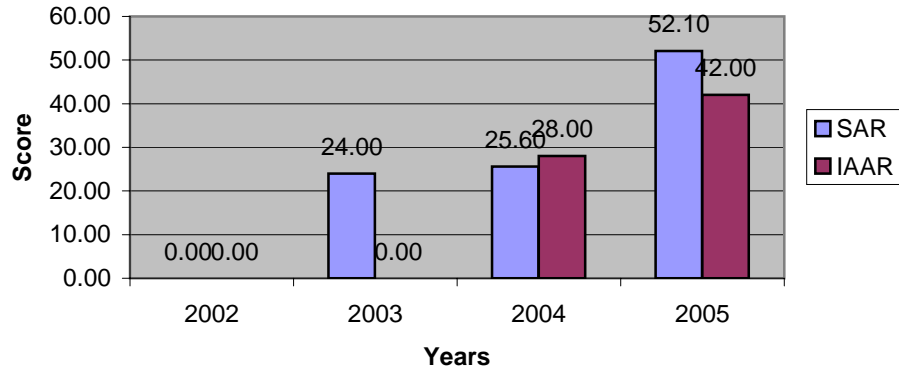
Office of President

### Internal Audit and Assessment Result 2002-2005

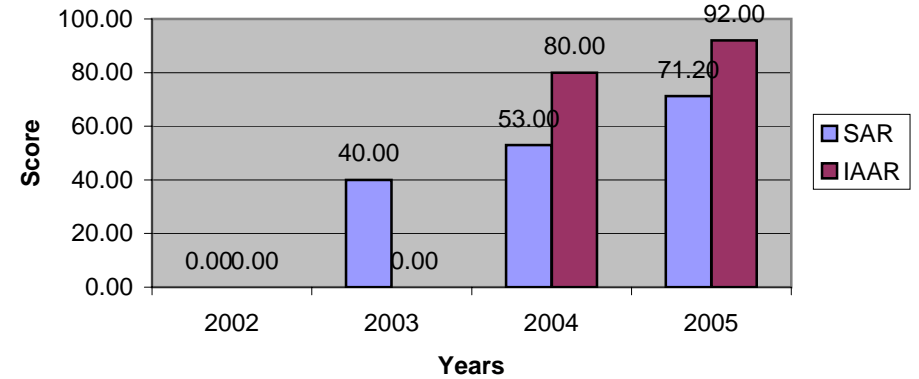


**Graph 3-10: Comparison by KPI of Internal Audit and Assessment Results of Academic year 2002-2005**  
Office of President

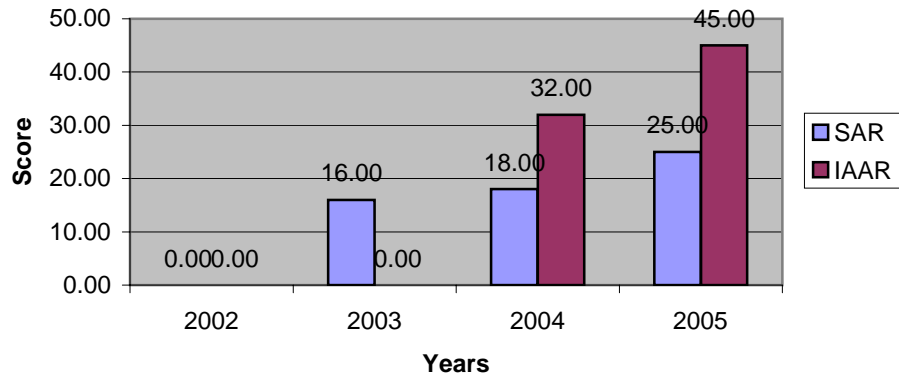
**Graph 3 : KPI 1 Vision, Mission and Strategic Plans (80)**



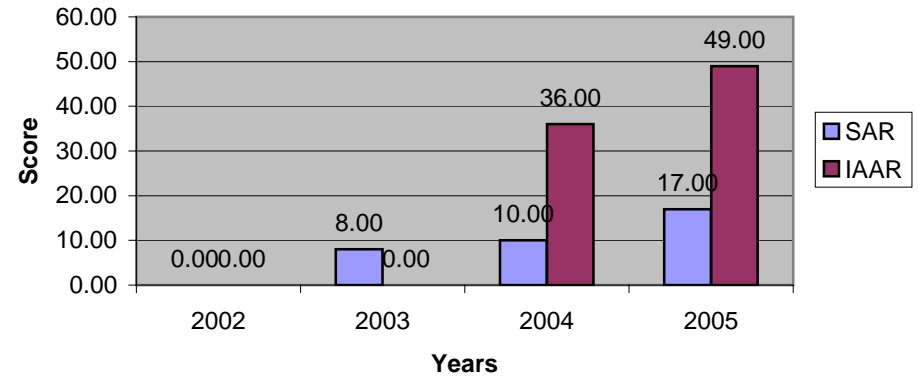
**Graph 4 : KPI 2 Teaching and Learning (200)**



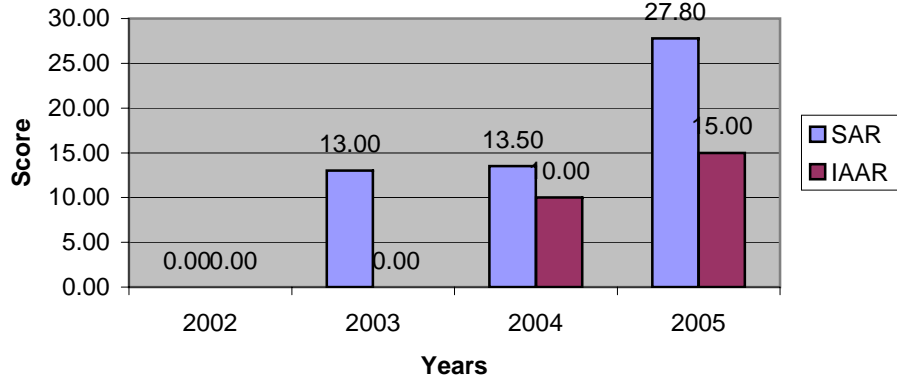
**Graph 5 : KPI 3 Student Activities (80)**



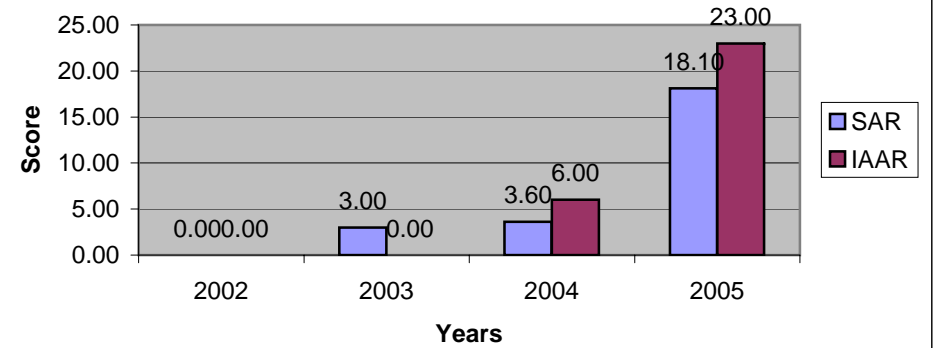
**Graph 6 : KPI 4 Research (80)**



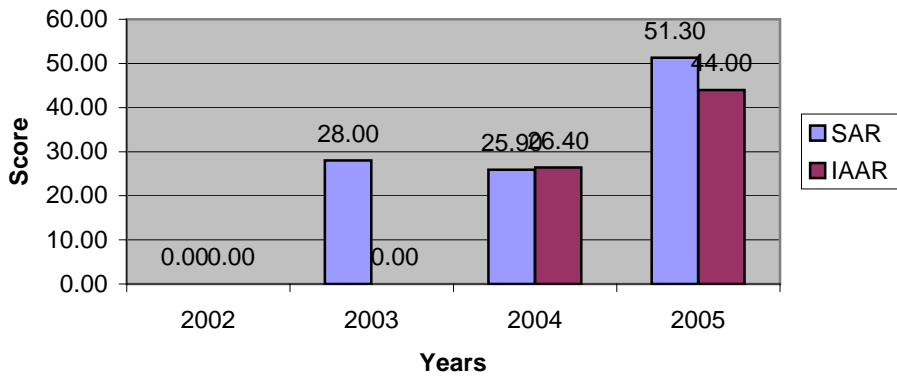
**Graph 7 : KPI 5 Academic Services (50)**



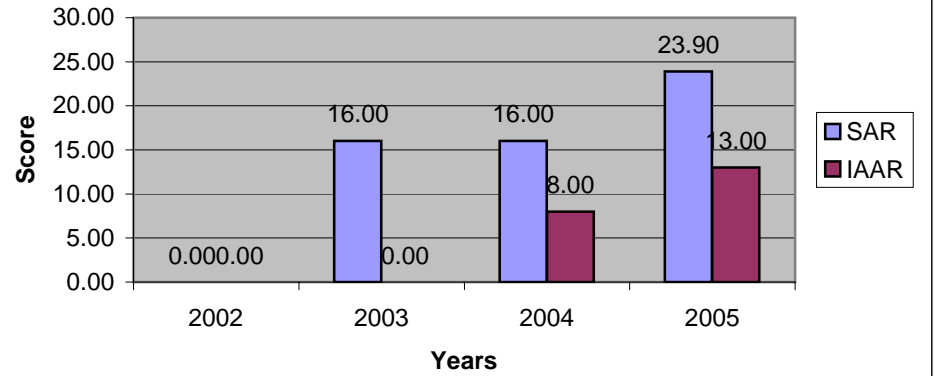
**Graph 8 : KPI 6 Promotion of Thai Arts and Cultures (30)**



**Graph 9 : KPI 7 Administration (120)**



**Graph 10 : KPI 8 Finance and Budgeting (40)**



**Graph 11 : KPI 9 Quality Assurance and Performance Results (320)**

