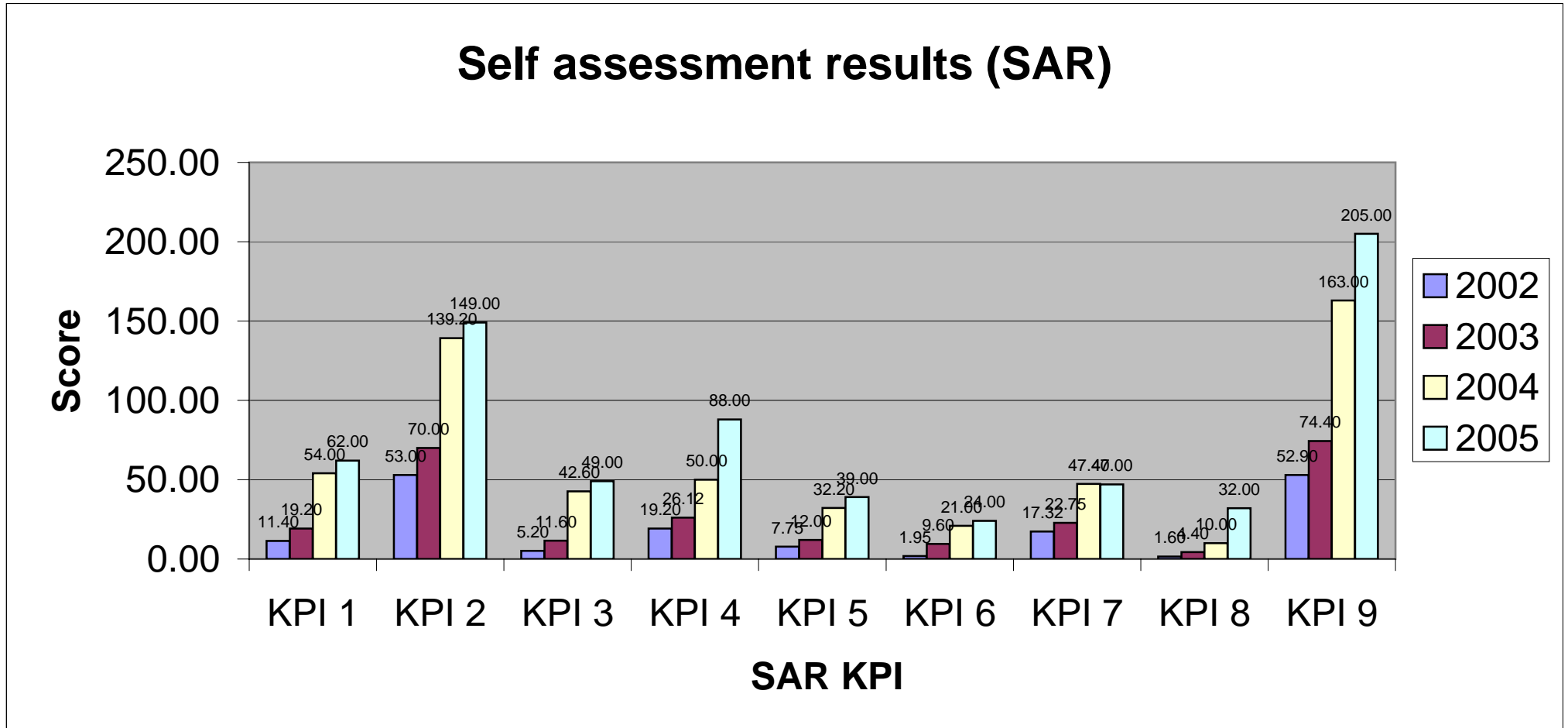


**Table 1: Comparison of SAR and IAAR by Academic Year 2002 - 2005  
Institute for English Language Education (IELE)**

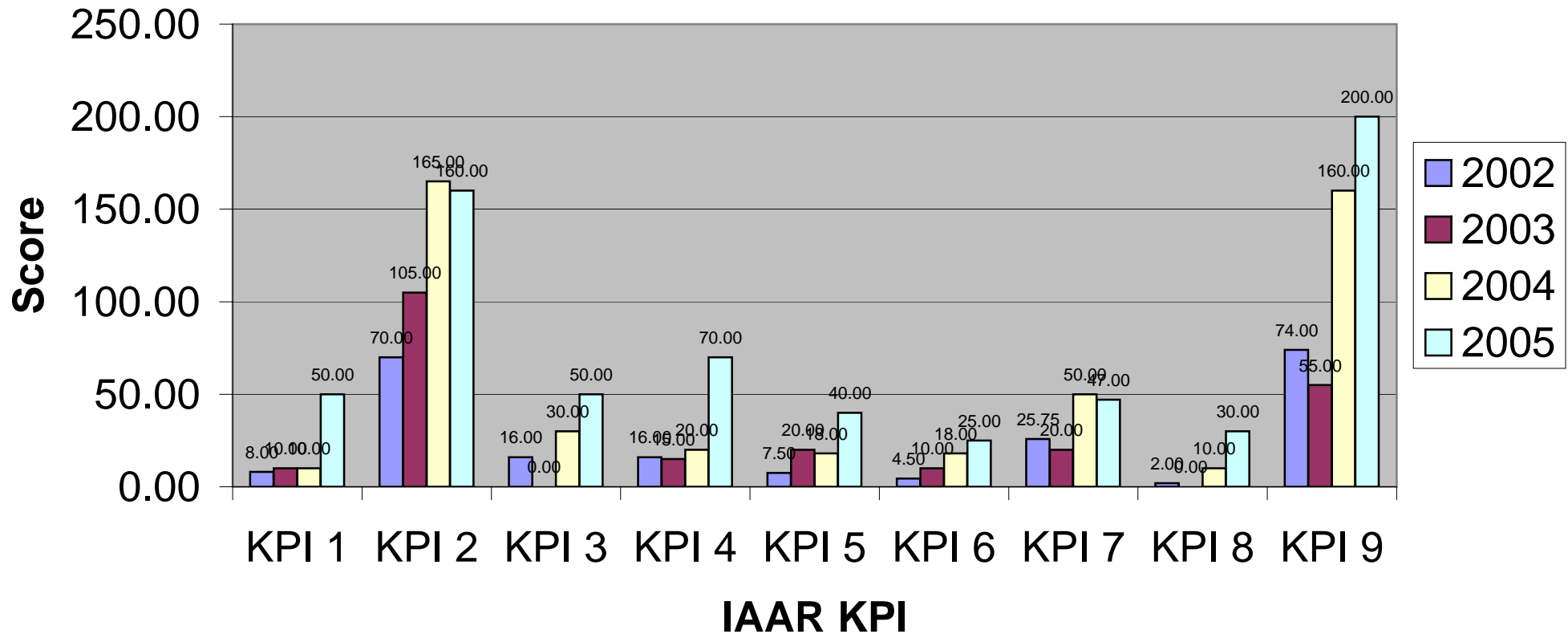
	Total Score	Band Performance (Low1 to High 8)					Combined 4 year average (2002-2005)		2002		2003		2004		2005	
	KPI Score Standards	2002-2005	2002	2003	2004	2005	SAR	IAAR	SAR	IAAR	SAR	IAAR	SAR	IAAR	SAR	IAAR
KPI 1	80	Low 3	Low 1	Low 1	3	6	36.65	19.50	11.40	8.00	19.20	10.00	54.00	10.00	62.00	50.00
KPI 2	200	Low 5	2	High 3	Low 7	Low 7	102.80	125.00	53.00	70.00	70.00	105.00	139.20	165.00	149.00	160.00
KPI 3	80	High 2	Low 1	Low 1	Low 4	High 5	27.10	24.00	5.20	16.00	11.60	0.00	42.60	30.00	49.00	50.00
KPI 4	120	High 2	Low 1	Low 1	2	Low 6	45.83	30.25	19.20	16.00	26.12	15.00	50.00	20.00	88.00	70.00
KPI 5	50	High 3	Low 1	High 2	4	Low 7	22.74	21.38	7.75	7.50	12.00	20.00	32.20	18.00	39.00	40.00
KPI 6	30	Low 4	Low 1	High 2	High 5	High 7	14.14	14.38	1.95	4.50	9.60	10.00	21.00	18.00	24.00	25.00
KPI 7	80	High 3	Low 2	Low 2	5	Low 5	33.62	35.69	17.32	25.75	22.75	20.00	47.40	50.00	47.00	47.00
KPI 8	40	Low 2	Low 1	Low 1	High 1	Low 7	12.00	10.50	1.60	2.00	4.40	0.00	10.00	10.00	32.00	30.00
KPI 9	320	Low 3	1	1	4	High 5	123.83	122.25	52.90	74.00	74.40	55.00	163.00	160.00	205.00	200.00
Total Score	1000	High 3	1	High 1	High 4	Low 6	418.70	402.94	170.32	223.75	250.07	235.00	559.40	481.00	695.00	672.00

**Graph 1: Self Assessment Results of Academic year 2002 – 2005**  
 Institute for English Language Education (IELE)



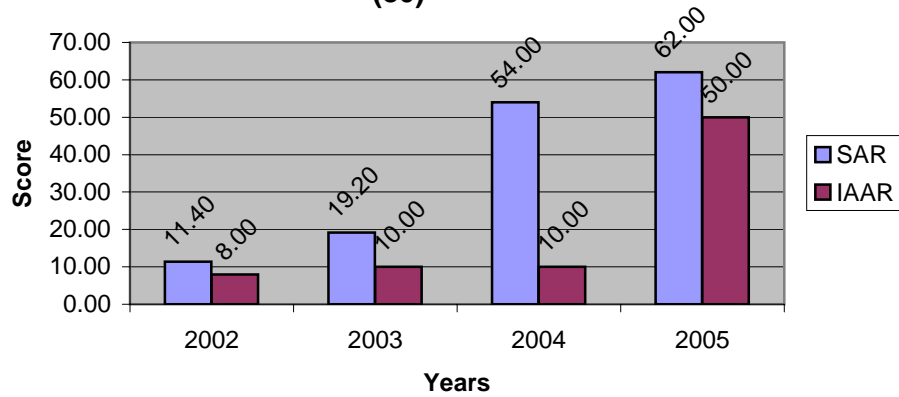
**Graph 2: Internal Audit and Assessment Results by the IAAT 2002 – 2005**  
 Institute for English Language Education (IELE)

## Internal Audit and Assessment Result 2002-2005

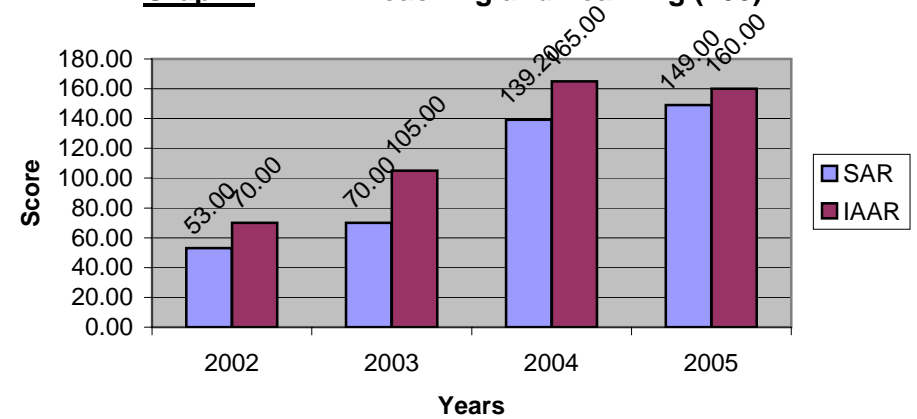


**Graph 3-10: Comparison by KPI of Internal Audit and Assessment Results of Academic year 2002-2005**  
**Institute for English Language Education (IELE)**

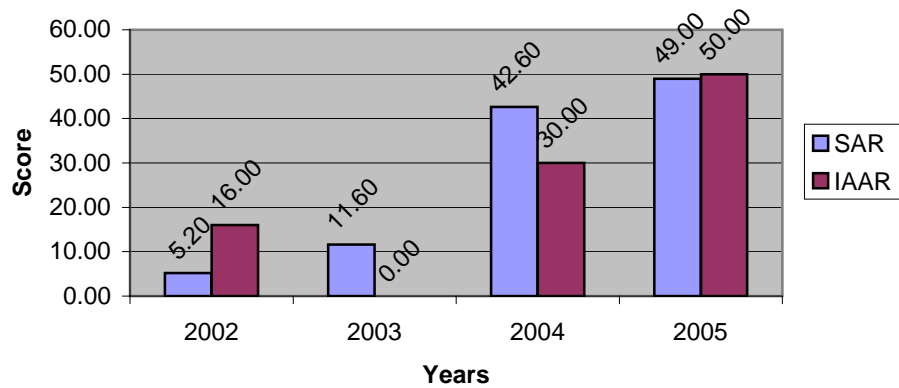
**Graph 3 : KPI 1 Vision, Mission and Strategic Plans (80)**



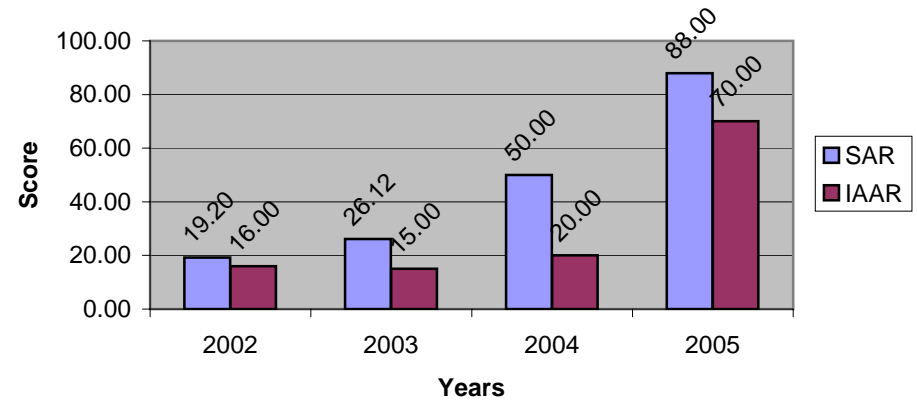
**Graph 4 : KPI 2 Teaching and Learning (200)**



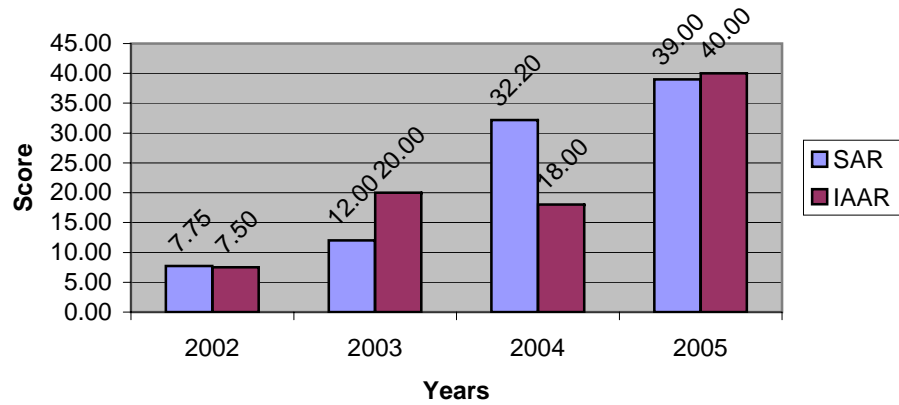
**Graph 5 : KPI 3 Student Activities (80)**



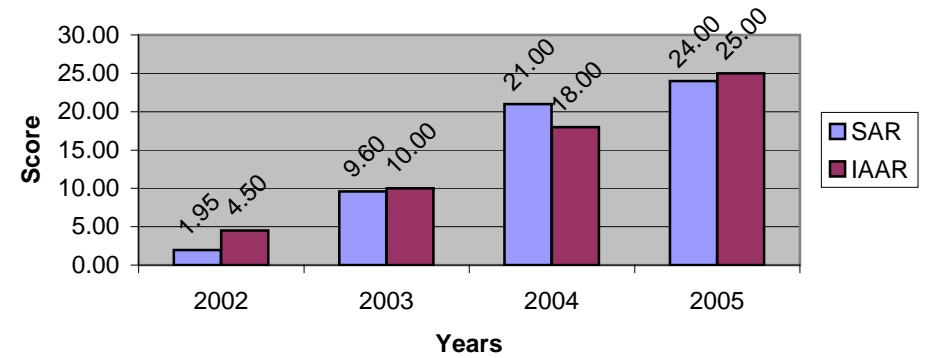
**Graph 6 : KPI 4 Research (120)**



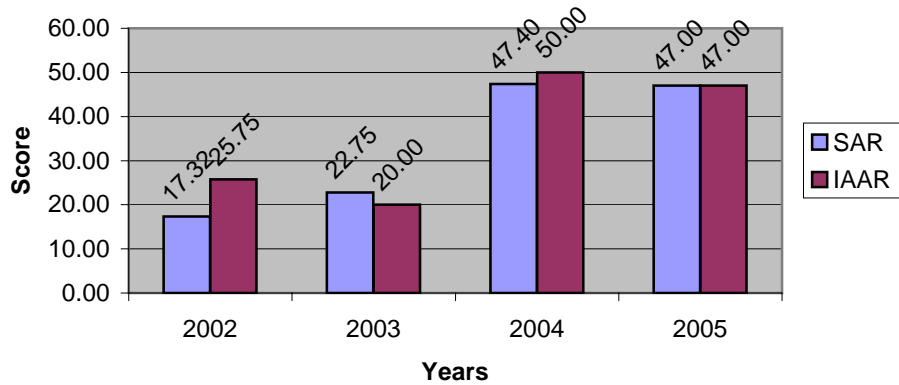
**Graph 7 : KPI 5 Academic Services (50)**



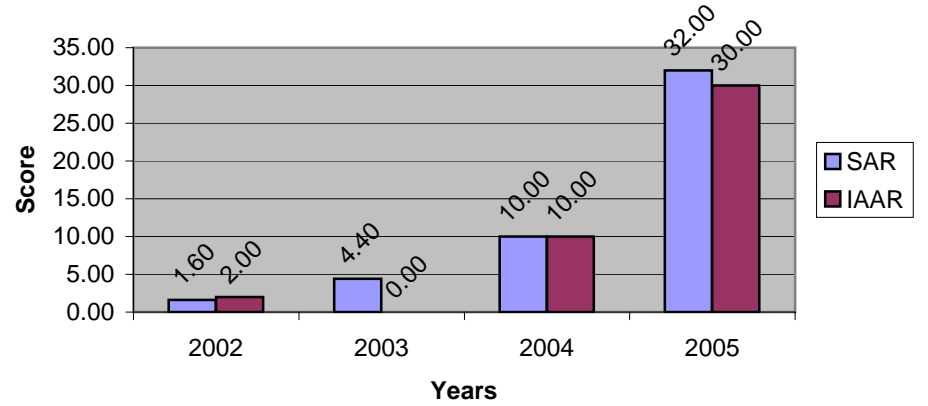
**Graph 8 : KPI 6 Promotion of Thai Arts and Cultures (30)**



**Graph 9 : KPI 7 Administration (80)**



**Graph 10 : KPI 8 Finance and Budgeting (40)**



**Graph 11 : KPI 9 Quality Assurance and Performance Results (320)**

